

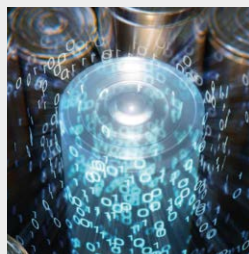
ARGENTO

by pininfarina



FRAME	aluminium alloy
SUSPENSIONS	rear
SPEED*	L1: < 6km/h; L2: ≤ 20km/h; L3: ≤ 25km/h; (max speed)
MAXIMUM SLOPE*	22%
BRAKES	front drum brake and rear electronic brake
TYRES	10" with front and rear inner tube
MAXIMUM LOAD	100kg
RIDER	check the current legislation in your country
OPERATING TEMPERATURE	-5 °C / 45 °C
PROTECTION LEVEL	IPX4
CHARGING TIME	approx 5 hours
AUTONOMY**	up to 40km
MOTOR	350W Brushless, 19.6Nm
PEAK POWER	0.6kW; 600W
DISPLAY	built-in LED
BATTERY	36V 10.0Ah 360Wh
LOW VOLTAGE PROTECTION	31V ± 0.5V
CURRENT LIMIT	15A
KERS	yes
LIGHTS	front and rear LEDs
WIRELESS CONNECTION	bluetooth
APP	H2 2022
TURN SIGNALS	no
NET WEIGHT	19.5kg
GROSS WEIGHT	22kg
OPEN ITEM DIMENSIONS	1200 x 510 x 1230mm
CLOSED ITEM DIMENSIONS	1200 x 510 x 560mm
PACKAGING DIMENSION	1220 x 195 x 600mm

36V 10Ah 360Wh
Battery



350W 19.6Nm
Brushless motor



Front drum and
rear e-brake



Rear
suspension



PI-M0-210001 | 8052679454792

* Always respect the highway code and the regulations in force in the country where the electric scooter is used.
** Subject to variations based on the rider's weight, on the road conditions and on the temperature.

All images are inserted for illustrative purposes, the products may undergo changes.



Imported and distributed by M.T. Distribution Srl
via Bolognese 10/r.d. 43012, Calderara di Reno, (BO) Italy
www.platum.com