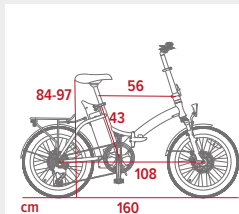


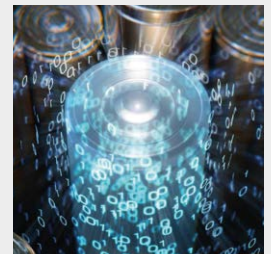


TYRES	20" x 1.95" brand Kenda
RIM	aluminum, silver anodized, double shoulder
BRAKES	mechanical disc front and rear, brand Logan, brake lever with cut off sensor
SHIFTER	Shimano Tourney 7 speed with rear derailleur
FRONT FORK	Mozo M-20, with suspension
CRANKSET	chain KMC, SXH 48T - 170mm
PEDALS	foldable plastic, YH-169X
FRAME	aluminum 6061, foldable
MAX SPEED	25Km/h
SEAT	CY, high elastic foam
SEAT POST	aluminum, internal suspension, folding saddle attachment
HANDLEBAR	aluminum, telescopic and foldable column
GRIPS	rubber, ergonomic XL, Argento logo
LIGHTS	front light: LED, DH003E 36V DC. Rear light: LED, DR009 (built-in battery)
DISPLAY	LED display waterproof with battery level indicator - PAS level indicator - On / Off light - Walk assist - Error codes - Bluetooth connection
MOTOR	Bafang 36V 250W 45Nm, rear
FENDER	aluminum with supports, black color
KICKSTAND	rear, side model, adjustable
REAR RACK	rear (max load 25 kg)
MAX LOAD WEIGHT	100kg
BATTERY	36V 10.4Ah 374Wh, external
RECHARGE PACK BATTERY	42.0V 2.0A
RANGE*	from 40 to 70km, this data depends on: level of assistance used, driver's weight, muscle power applied in pedaling, tire pressure, road slope, number of stops and restarts
GROSS WEIGHT BATTERY	2.7Kg
NET WEIGHT	19.9Kg
GROSS WEIGHT	~22.6Kg
PACKAGING DIMENSIONS	87 x 50 x 69cm

E-bike dimensions



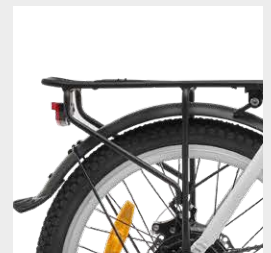
Foldable and compact frame



Mechanical disc brakes with cut-off



36V 10.4Ah 374Wh battery



AR-BI-220003 | 8052679455980