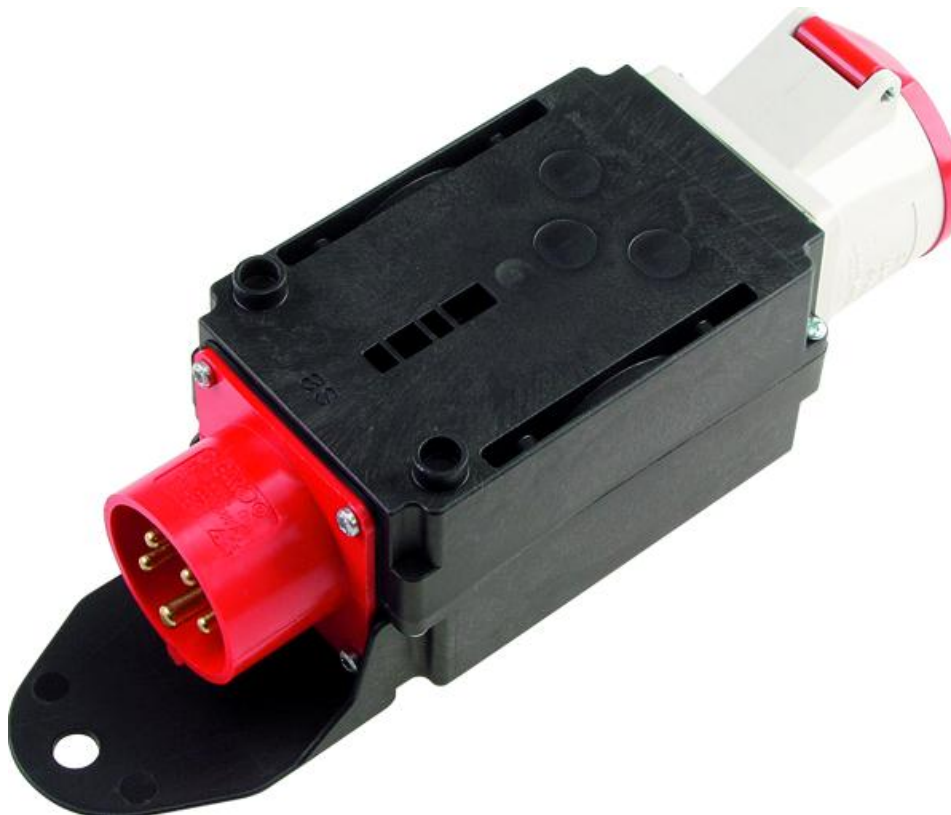


Skizze / Bild



| CEE-Adapter 400V CEE   | CEE-adapter 400V CEE   |
|--|--|
| <b>Steckdosen:</b> <ul style="list-style-type: none"> <li>VDE geprüft</li> <li>IP44 Spritzwassergeschützt,</li> <li>schwarz</li> </ul>   | <b>Sockets:</b> <ul style="list-style-type: none"> <li>VDE proved</li> <li>water-protected</li> <li>black</li> </ul>   |
| <b>Anschluss:</b> <ul style="list-style-type: none"> <li><b>Eingang:</b><br/>1,5m H07RN-F 5G1,5; Gummischlauchleitung mit CEE-Stecker 400V / 16A 5-polig;</li> <li><b>Ausgang:</b><br/>1 x CEE-Steckdose 400V / 16A, 5-polig</li> <li><b>Spannung:</b><br/>U=400VAC, 50-60 Hz</li> </ul> | <b>Connection:</b> <ul style="list-style-type: none"> <li><b>Power input:</b><br/>1,5m H07RN-F 3G1,5 rubber hose cord with CEE plug 400V / 16A 5-pole</li> <li><b>Power output:</b><br/>1x CEE-plug 400V / 16A, 5-pole;</li> <li><b>Voltage:</b><br/>U=400VAC, 50-60 Hz</li> </ul> |
| <b>Abmessungen</b> (Länge x Breite x Höhe) in mm: <ul style="list-style-type: none"> <li>215 / 95 / 80 mm</li> </ul>   | <b>Measurements</b> (length x width x height): <ul style="list-style-type: none"> <li>215 / 95 / 80 mm</li> </ul>  |
| <b>Gewicht:</b> <ul style="list-style-type: none"> <li>Ca. 0,7 Kg</li> </ul>   | <b>Weight:</b> <ul style="list-style-type: none"> <li>Approx. 0,7 kg</li> </ul>  |
| <b>Lieferumfang:</b> <ul style="list-style-type: none"> <li>1x Einschaltstrombegrenzer</li> </ul>  | <b>Extent of delivery:</b> <ul style="list-style-type: none"> <li>1x Inrush current limiter</li> </ul>   |