



Datenblatt - Fiche technique - Data sheet

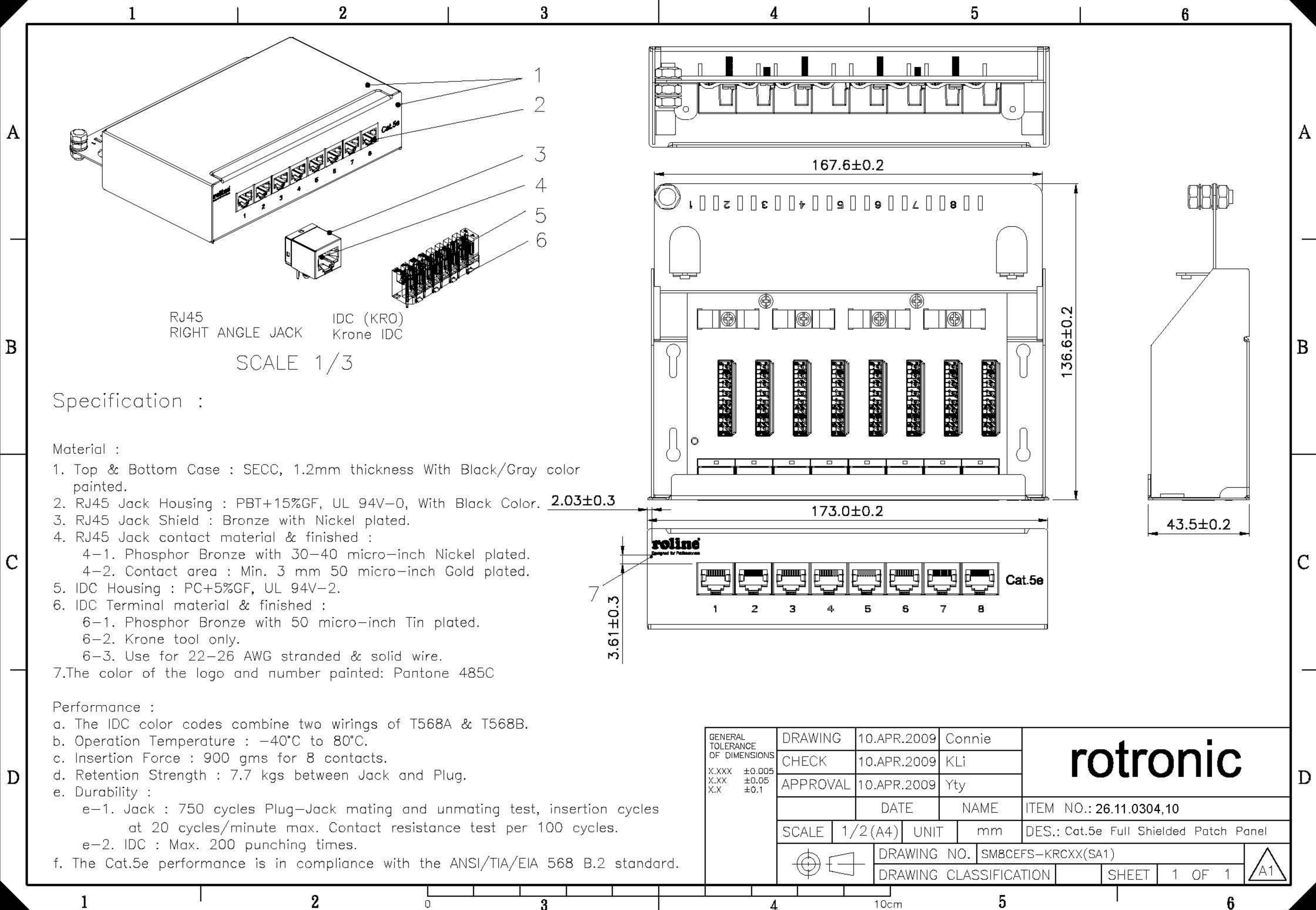
26.11.0304



ROLINE Patchpanel, 8 Ports, Kat.5e, geschirmt, lichtgrau

ROLINE Panneau de brassage cat. 5e, 8 ports, gris

ROLINE Cat.5e Wall Mount Patch Panel, 8 Ports, STP, light grey



RJ45 RIGHT ANGLE JACK IDC (KRO) Krone IDC

SCALE 1/3

Specification :

Material :

1. Top & Bottom Case : SECC, 1.2mm thickness With Black/Gray color painted.
2. RJ45 Jack Housing : PBT+15%GF, UL 94V-0, With Black Color. 2.03 ± 0.3
3. RJ45 Jack Shield : Bronze with Nickel plated.
4. RJ45 Jack contact material & finished :
 - 4-1. Phosphor Bronze with 30-40 micro-inch Nickel plated.
 - 4-2. Contact area : Min. 3 mm 50 micro-inch Gold plated.
5. IDC Housing : PC+5%GF, UL 94V-2.
6. IDC Terminal material & finished :
 - 6-1. Phosphor Bronze with 50 micro-inch Tin plated.
 - 6-2. Krone tool only.
 - 6-3. Use for 22-26 AWG stranded & solid wire.
7. The color of the logo and number painted: Pantone 485C

Performance :

- a. The IDC color codes combine two wirings of T568A & T568B.
- b. Operation Temperature : -40°C to 80°C .
- c. Insertion Force : 900 gms for 8 contacts.
- d. Retention Strength : 7.7 kgs between Jack and Plug.
- e. Durability :
 - e-1. Jack : 750 cycles Plug-Jack mating and unmating test, insertion cycles at 20 cycles/minute max. Contact resistance test per 100 cycles.
 - e-2. IDC : Max. 200 punching times.
- f. The Cat.5e performance is in compliance with the ANSI/TIA/EIA 568 B.2 standard.

GENERAL TOLERANCE OF DIMENSIONS X.XXX ±0.005 X.XX ±0.05 X.X ±0.1	DRAWING	10.APR.2009	Connie	<h1>rotronic</h1>	
	CHECK	10.APR.2009	KLi		
	APPROVAL	10.APR.2009	Yty		
		DATE	NAME	ITEM NO.: 26.11.0304,10	
	SCALE	1/2(A4)	UNIT	mm	DES.: Cat.5e Full Shielded Patch Panel
	DRAWING NO. SM8CEFS-KRCXX(SA1)		DRAWING CLASSIFICATION		SHEET 1 OF 1
					A1