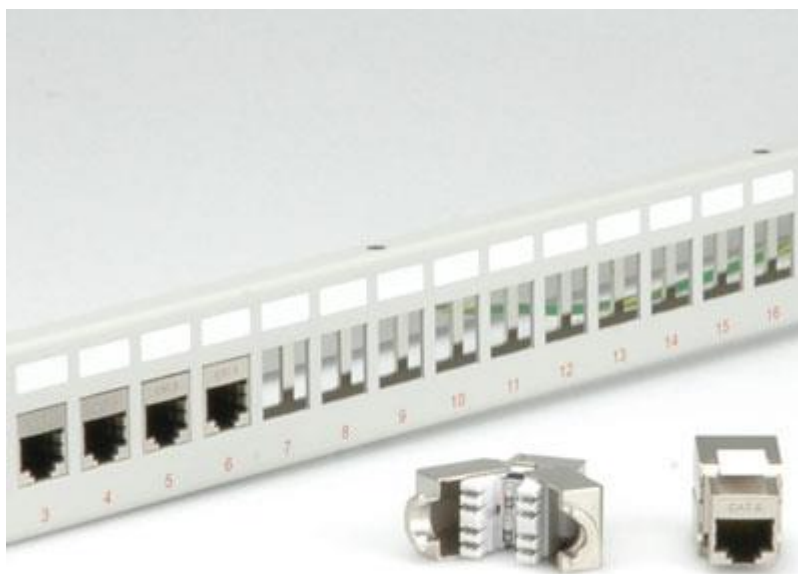




Datenblatt - Fiche technique - Data sheet

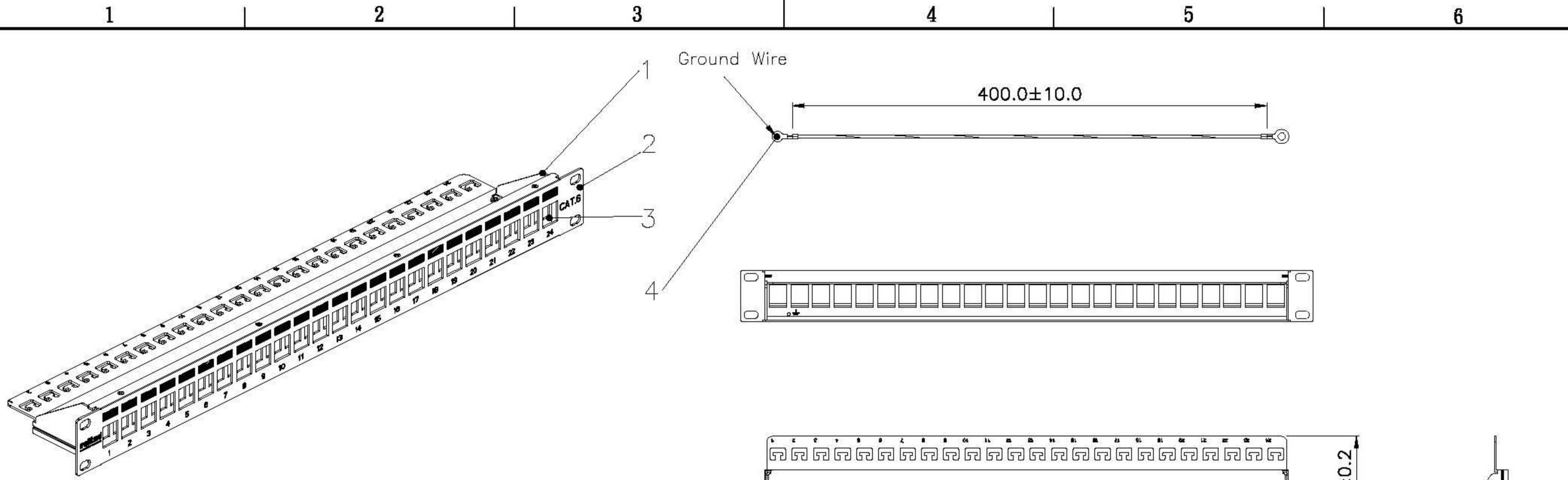
**26.11.0359**



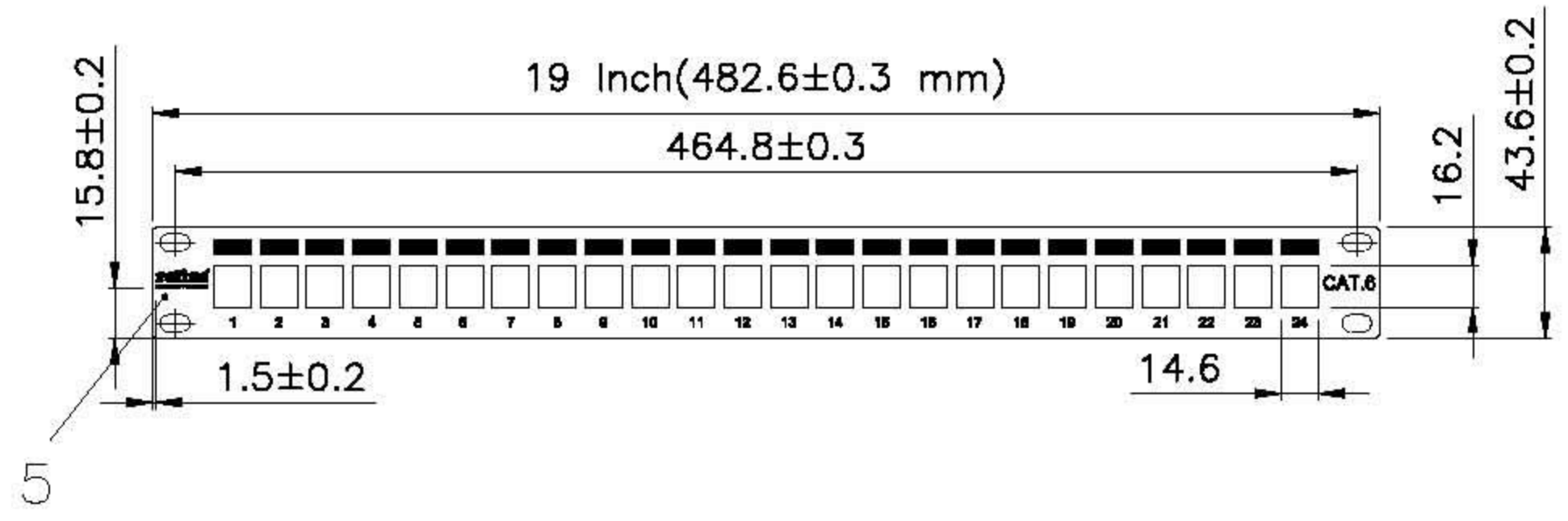
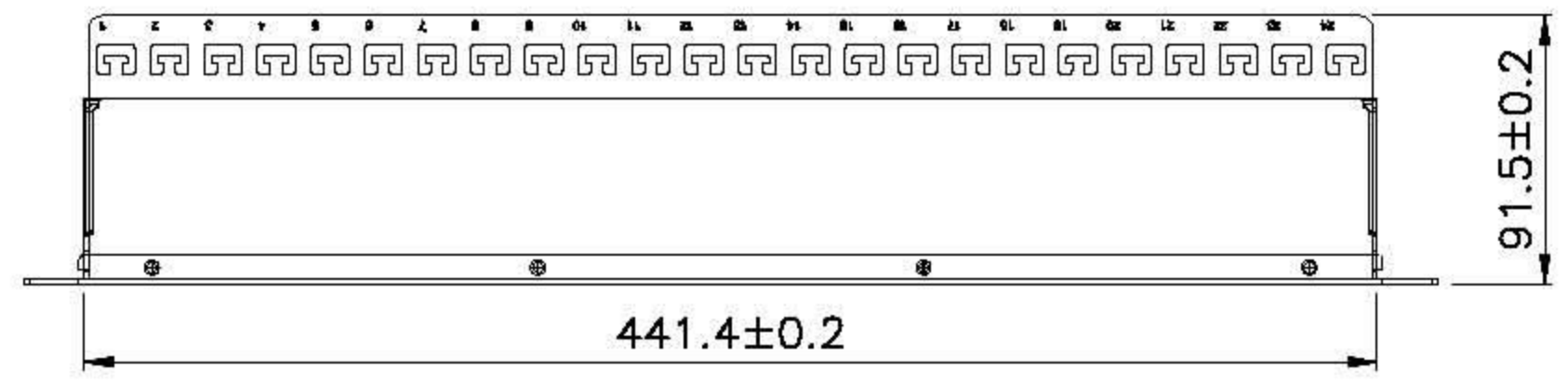
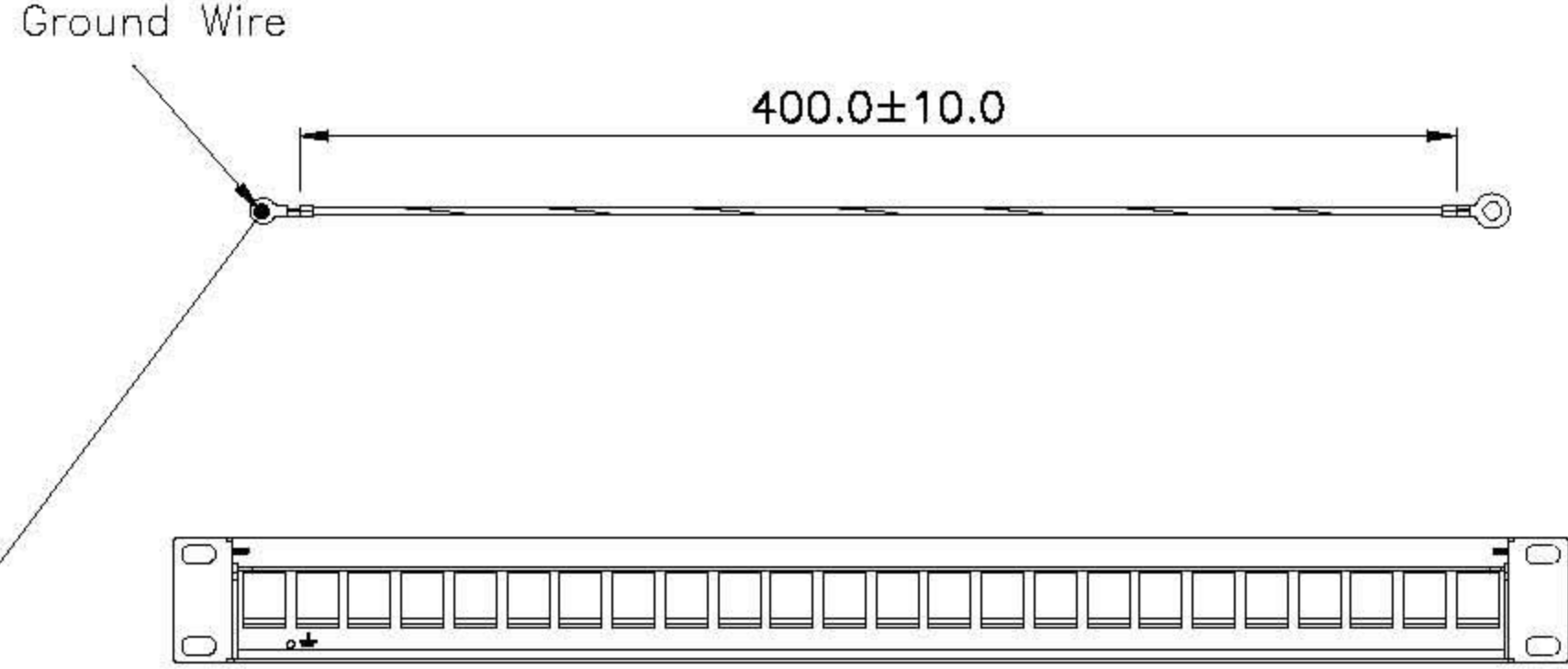
19"-Keystone-Modulträger, 24P., geschirmt, lichtgrau

Panneau de brassage 19" pour Keystone, 24 ports blindé, gris clair

Keystone 19" Module frame Cat.5/Cat.6/Cat.6a, 24 Ports, shielded, light grey



SCALE 1/4



Specification :

Material :

1. Support Bar : SPCC, 1.5mm thickness with Black/Gray color painted.
2. Top Case : SPCC, 1.5mm thickness with Black color painted.
3. Base Case : SPCC, 1.5mm thickness with 5~8um Nickel plated.
4. Ground Wire : 18 AWG Wire, with Green/Yellow striped color, length 40 cm
5. The color of the logo and number painted: Pantone 485C

GENERAL TOLERANCE OF DIMENSIONS X.XXX ±0.005 X.XX ±0.05 X.X ±0.1	DRAWING	19.MAR.2009	Connie	<h1>rotronic</h1>	
	CHECK	19.MAR.2009	KLi		
	APPROVAL	19.MAR.2009	Yty		
			DATE	NAME	ITEM NO.: 26.11.0359,60
SCALE		1/5 (A4)	UNIT	mm	DES.: Cat.6 24 port FS Keystone Panel
		DRAWING NO. PKJF24-C6/XX(SA1)			
		DRAWING CLASSIFICATION			SHEET 1 OF 1